

# PhilharmoniaBaroque Orchestra&Chorale

Music Director  
Peter Whelan



# THE <sup>26</sup><sub>27</sub> POWER OF

*Music*

SAN FRANCISCO  
BERKELEY  
PALO ALTO

Feel the impact of music performed on period instruments

Tickets as low as \$40 *On Sale Now!*

[philharmonia.org](http://philharmonia.org)

# MUSIC DIRECTOR PETER WHELAN



Cover: Philharmonia Baroque  
Orchestra & Chorale in performance  
at Stanford Live by Kristen Loken  
Peter Whelan photo  
by Marco Borggreve

Brochure design by Dennis Bolt

## Welcome

# 26 27

It's my great pleasure—and no small honor—to be writing to you as Music Director of Philharmonia Baroque Orchestra & Chorale.

From my first rehearsals last year, I was struck by the spirit of curiosity, generosity, and sheer musical joy that runs through this ensemble and its audience. This season reflects that energy: music chosen for its character, its drama, and the particular spark it takes on when played on period instruments by musicians who truly love this repertoire.

I can't wait to share these concerts with you—old friends and new alike—and to discover, together, just how powerful this music can be when it's allowed to speak in its own voice.

Warmly,

Peter Whelan, Music Director

**“Peter Whelan is one of the most dynamic figures in early music today.”**

— BBC Radio 3

# THE 2026/27 Season IS HERE

We are thrilled to present Peter Whelan's inaugural season as Music Director of Philharmonia Baroque Orchestra & Chorale!

The season opens with a special project—a semi-staged production of Handel's *Tolomeo*—performed in the Bay Area before traveling east for a summer festival tour, including a return to Lincoln Center. The subscription concert series begins in the fall, as Peter returns to Handel with *Alexander's Feast*, following his acclaimed performances with the Irish Baroque Orchestra at the 2025 BBC Proms.

We invite you to explore the full 2026/27 season. Single concert tickets start at \$40, or choose 3, 4, or 5 concerts and subscribe to enjoy our best prices, exclusive benefits, and early access to in-demand performances. Across the season, you'll hear this music performed on period instruments—bringing you closer to how this music was first heard.

We look forward to welcoming you in 2026/27!



**"The performance was so good, I cried."**

—Jonathan S., subscriber

**"I attend rock concerts—this was my first classical music concert. It was beautiful in every way."**

—Linda H., first-time concert attendee

Photos by: Scott Chernis, Sean Pedruco, Stefan Cohen, Kristen Loken

JULY  
23-26



Lauren Snouffer



Nicole Heaston



Kangmin Justin Kim



Dashon Burton



Peter Whelan



James Darrah Black

Special  
EVENT

# Handel's TOLOMEO

An opera  
about exile,  
loyalty, and  
survival under  
pressure

Aryeh Nussbaum Cohen



What happens when a king loses everything—his crown, his name, even his place in the world?

Philharmonia embarks on a new era as Music Director Peter Whelan opens his tenure with Handel's *Tolomeo*, a semi-staged opera with a star-studded cast led by countertenor Aryeh Nussbaum Cohen.

An exiled ruler lives under a false identity as loyalties shift and identities unravel, and love proves more complicated—and more resilient—than expected. With arias that move from quiet introspection to full-blown drama, *Tolomeo* tells a gripping story of identity, survival, and what remains when everything else falls away.

Tolomeo: **Aryeh Nussbaum Cohen**, countertenor

Seleuce: **Lauren Snouffer**, soprano

Elisa: **Nicole Heaston**, soprano

Alessandro: **Kangmin Justin Kim**, countertenor

Araspe: **Dashon Burton**, bass-baritone

Conductor: **Peter Whelan**

Director: **James Darrah Black**

**HANDEL** *Tolomeo, re d'Egitto*, HWV 25

**THURSDAY** July 23, 7:30pm

San Francisco: Herbst Theatre

**FRIDAY** July 24, 7:30pm

Berkeley: First Congregational Church

**SUNDAY** July 26, 4:00pm

Caramoor Center, NY: Venetian Theater

Pictured: David McVicar production  
of Handel's *Giulio Cesare*  
Photo by Richard Hubert Smith

Sung in Italian, with English supertitles, this performance is  
approximately 2 hours 30 minutes, including a 20 minute intermission.

**NOV 11-14**

When music  
changes what  
people feel  
and do

# Handel's **THE POWER OF MUSIC**

Refresh off his 2025 BBC Proms success with the Irish Baroque Orchestra, Music Director Peter Whelan sets the table for the 2026/27 subscription concert season with Handel's *Alexander's Feast*.

Centered on a banquet honoring Alexander the Great, the poet Timotheus uses song to steer the room from pride to tenderness, from fury to reflection—showing music's power to create emotion, not just accompany it. First performed in Dublin in 1742 and receiving its U.S. Premiere, this version highlights the Philharmonia Chorale and a standout cast.

**Peter Whelan**, conductor  
**Sherezade Panthaki**, soprano  
**Rachael Wilson**, mezzo-soprano  
**James Way**, tenor  
**Philharmonia Chorale**,  
**Valérie Sainte-Agathe**, director

**HANDEL** *Alexander's Feast*, or *The Power of Music*  
(1742 Dublin version) (U.S. PREMIERE)

"Throughout the evening, Peter Whelan drew a remarkably communicative and urgent performance from all his players... Whelan managed to make every note vital, filling the hall with vibrant sounds yet also conveying the meaning of the work with the importance of music. Rarely has large-scale Handel felt so involving."  
—Robert Hugill, *Planet Hugill*



Sherezade Panthaki

Rachael Wilson

James Way

Valérie Sainte-Agathe

**WEDNESDAY** November 11, 7:30pm Stanford: Bing Concert Hall  
**FRIDAY** November 13, 7:30pm San Francisco: Herbst Theatre  
**SATURDAY** November 14, 2:30pm Berkeley: First Congregational Church

*This performance is approximately 2 hours, including a 20 minute intermission.*

Photo by Jen Owens. Painting: *Alexander the Great Founding Alexandria* by Placido Costanzi. The Walters Art Museum.

DEC 3-5

# Baroque BRILLIANCE

A bright,  
celebratory  
program for  
the season

A bright, celebratory program for the holiday season, Baroque Brilliance features two festive showpieces for soprano and trumpet: Handel's "Let the Bright Seraphim" and J.S. Bach's *Jauchzet Gott in allen Landen*. Between them, Telemann's *Don Quixote* suite brings the story to life—from the knight's swagger to his comic misadventures—while C.P.E. Bach's cello concerto offers a more intimate, expressive contrast. The West Coast premiere of a piece for soprano and oboe by Mozart contemporary Marianna Martines adds something new to discover in a program filled with music that is vivid, high energy, and full of the spirit of the season.

**Patrick Dupré Quigley**, conductor

**Kathryn Mueller**, soprano

**William Skeen**, violoncello

**Gonzalo X. Ruiz**, oboe

**Kathryn Adduci**, trumpet

**HANDEL** "Let the Bright Seraphim" from *Samson*

**MARTINES** *O virgo, cui salutem debet orbis*  
(WEST COAST PREMIERE)

**TELEMANN** *Burlesque de Quixotte*, TWV 55:G10

**C.P.E. BACH** Concerto for violoncello in A major, Wq 172

**J.S. BACH** *Jauchzet Gott in allen Landen*, BWV 51



Patrick Dupré Quigley, conductor



Kathryn Mueller

William Skeen

Gonzalo X. Ruiz

Kathryn Adduci

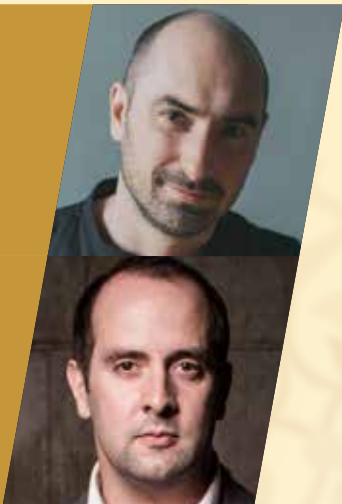
**THURSDAY** December 3, 7:30pm Palo Alto: First United Methodist Church  
**FRIDAY** December 4, 7:30pm San Francisco: Herbst Theatre  
**SATURDAY** December 5, 2:30pm Berkeley: First Congregational Church

This performance is approximately 2 hours, including a 20 minute intermission.

Photo by Curtis Perry. Painting: Archangel Remiel, Angel of Hope, Vatican Museums.

**FEB 5-7**

Peter Whelan



Tarik O'Regan

Joseph  
Tawadros



*From  
Baroque  
strings  
to a new  
voice in the  
concerto  
tradition*

# Vivaldi AND THE OUD

Peter Whelan leads a program anchored in Vivaldi's propulsive string writing, paired with a newly commissioned concerto by Philharmonia Composer-in-Residence Tarik O'Regan.

Vivaldi's *L'Olimpiade* overture opens the program at full speed, with music that's built on rhythm, momentum, and drive, and that same energy continues in his concertos from *L'Estro armonico*. O'Regan's concerto, receiving its world premiere, features acclaimed oud soloist Joseph Tawadros and places the oud—an ancient plucked instrument central to Middle Eastern musical traditions—in a solo role more often occupied by violin or cello, set against the string orchestra.

**Peter Whelan**, conductor  
**Joseph Tawadros**, oud

**VIVALDI** Overture to *L'Olimpiade*

**TARIK O'REGAN** Concerto for oud, strings, and percussion  
(World Premiere)

**VIVALDI** Concerti for multiple violins from *L'Estro armonico*

**FRIDAY** February 5, 2027, 7:30pm San Francisco: Herbst Theatre  
**SATURDAY** February 6, 2027, 2:30pm Berkeley: First Congregational Church  
**SUNDAY** February 7, 2027, 2:30pm Stanford: Bing Concert Hall

*This performance is approximately 2 hours, including a 20 minute intermission.*

Photo by Anthony Lycett. Painting: *David Playing the Harp* by Jan de Bray, Staatliche Kunsthalle.

MAR 4-6

# BAROQUE

## on Stage

Rachell  
Ellen Wong



### Drama, dance rhythms, and virtuosity for Baroque orchestra

The Baroque stage comes to life as overtures, dances, and theatre music that once filled 18th-century stages are performed here in concert—no sets, dancers, or costumes, just the music, performed on period instruments.

Led from the violin by Rachell Ellen Wong, this program reflects her personal selections: rhythmic, theatrical, and full of character and Baroque dramatic flair.

**Rachell Ellen Wong,**  
violin and leader

#### **PURCELL** Music for the Theatre

*Timon of Athens:* Curtain Tune  
Overture from *The Virtuous Wife*  
Minuet from *The Gordian Knot Untied*  
La Furstemberg from *The Virtuous Wife*  
Slow Aire from *The Virtuous Wife*  
Rondeau from *The Indian Queen*  
Hornpipe from *The Fairy Queen*

#### **RAMEAU** Orchestral Suite

Air tendre from *Les fêtes d'Hébé*  
Overture from *Dardanus*  
Musette from *Les fêtes d'Hébé*  
Contredanse from *Les surprises de l'Amour*  
Loure from *Les surprises de l'Amour*  
Prélude pour *l'Adoration du Soleil* from *Les Indes galantes*  
Entrée de Polymnie from *Les Boréades*  
Chaconne from *Dardanus*  
Tambourins I & II from *Dardanus*

**C.P.E. BACH** Symphony in B minor, H. 661, Wq 182/5

**VIVALDI** Violin Concerto in D minor, RV 208, "Grosso Mogul"

**GEMINIANI** *La Follia* Variations (arr. Michi Wiancko)

**THURSDAY** March 4, 2027, 7:30pm Palo Alto: First United Methodist Church

**FRIDAY** March 5, 2027, 7:30pm San Francisco: Herbst Theatre

**SATURDAY** March 6, 2027, 2:30pm Berkeley: First Congregational Church

*This performance is approximately 2 hours, including a 20 minute intermission.*

Photo by Lucien Knuteson. Painting: *La Camargo Dancing* by Nicolas Lancret, National Gallery of Art, Washington, DC.

APR 9-11

A choral epic about light, nature,  
and the origins of humanity

# The CREATION

One of the Classical era's most influential and powerful choral works, Haydn's *The Creation* unfolds in three parts: from darkness to light, through the formation of the natural world, to the arrival of Adam and Eve. It's a masterpiece of musical storytelling, from the famous opening depiction of chaos to the moment light breaks through, and on to scenes of animals, landscapes, and human life.

Music Director Peter Whelan leads Philharmonia Baroque Orchestra & Chorale and a distinguished cast of soloists in performances that close the season on a celebratory note.

**Peter Whelan**, conductor

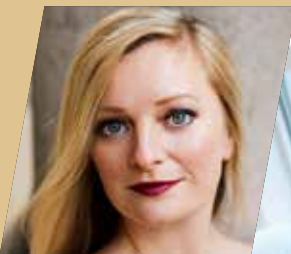
**Lucy Crowe**, soprano

**Nicholas Phan**, tenor

**Enrico Lagasca**, bass-baritone

**Philharmonia Chorale, Valérie Sainte-Agathe**, director

**HAYDN** *The Creation*, Hob. XXI:2



Lucy Crowe



Nicholas Phan



Enrico Lagasca



Valérie Sainte-Agathe



**FRIDAY** April 9, 2027, 7:30pm San Francisco: Herbst Theatre  
**SATURDAY** April 10, 2027, 2:30pm Berkeley: First Congregational Church  
**SUNDAY** April 11, 2027, 2:30pm Stanford: Bing Concert Hall

*This performance is approximately 2 hours and 15 minutes, including a 20 minute intermission.*

Photo: Philharmonia Baroque Orchestra & Chorale in performance at Stanford Live by Kristen Loken.  
Painting: *Adam and Eve in the Garden of Eden* by Johann Wenzel Peter, Vatican Museums.

# SESSIONS

Philharmonia SESSIONS are intimate concerts that spotlight individual artists and distinctive musical voices in relaxed, informal settings, designed for close listening.

## JAN 30

SATURDAY, JAN 30, 2027, 8:00 PM  
A Special Co-Presentation with  
The Freight, Berkeley

## THE *Art* OF THE OUD

Cairo-born, eight-time ARIA Award winner Joseph Tawadros is one of the world's leading masters of the oud—an Arabic fretless lute and ancestor of the theorbo, and modern guitar. Renowned for his technique, musicianship, and expressive range, he performs in major concert halls worldwide.

For this rare U.S. solo appearance, Tawadros presents a curated program of original music inspired by the Arabic modal system (*maqam*), blending it seamlessly with elements of Baroque music, jazz, folk, and beyond. The program moves from thrilling, fast-paced works to introspective, lyrical pieces, unified by his distinctive musical voice and the contemporary sound of the oud.

**Joseph Tawadros, oud**

**\$90 Premium  
General Admission**  
Subscribers pay \$85!

**\$65 General Admission**  
Subscribers pay \$60!

Photo by Anthony Lycett.

## MAY 6

THURSDAY, MAY 6, 2027, 7:30 PM  
Oshman Family JCC, Palo Alto

## ALEXI KENNEY *with* PHILHARMONIA BAROQUE

Johann Sebastian Bach is central to how we hear Baroque music today—but a century after his death, much of his work had faded from view until Felix Mendelssohn revived the *St. Matthew Passion*.

In this program with Alexi Kenney and Philharmonia Chamber Players, you'll hear how that moment helped bring Bach back into the spotlight. With lively insights from Scholar-in-Residence Francesco Spagnolo, the concert traces the connections between the Bach and Mendelssohn families—and the legacy they carried forward across generations.

**Alexi Kenney, violin**  
**Francesco Spagnolo,**  
scholar-in-residence  
**Philharmonia Chamber Players**

**J.S. BACH** Chorale  
"Erkenne mich, mein Hüter"  
from *St. Matthew Passion*

**Fanny MENDELSSOHN**  
String Quartet  
in E-flat major, H277

**Felix MENDELSSOHN**  
String Octet  
in E-flat major,  
Op. 20



Francesco Spagnolo

**\$65 General  
Admission**  
Subscribers  
pay \$60!



Alexi Kenney

Photo by Grittani Creative.

# PHILHARMONIA *An Tour*

## HANDEL'S TOLOMEO @ CARAMOOR

See page 6 for program information.

SUNDAY, July 26, 4:00pm

Caramoor Center, NY: Venetian Theater

Tickets: (914) 232-1252 | [boxoffice@caramoor.org](mailto:boxoffice@caramoor.org)



## PHILHARMONIA BAROQUE @ LINCOLN CENTER

Peter Whelan, conductor; Lauren Snouffer, soprano

Aryeh Nussbaum Cohen, countertenor; Dashon Burton, bass-baritone

HANDEL *Water Music* Suite No. 1 in F major,  
selection of arias and duets

CAROLINE SHAW *Is a Rose*

THURSDAY, August 6, 7:30pm

New York (NY), Alice Tully Hall, Lincoln Center

Tickets: (800) 305-2768 [support@eticketsboxoffice.com](mailto:support@eticketsboxoffice.com)



### INTRODUCING A NEW 4-PART ADULT EDUCATION COURSE

## INSIDE BAROQUE *The Sound, Style, and Stories Behind the Music*

Philharmonia's program notes annotator Scott Foglesong offers four nights of practical introduction to the music, the composers, and the ideas and stories behind it.

**PART 1: What is Baroque?**

**PART 3: Choral and Vocal Music**

**PART 2: Orchestral Music**

**PART 4: Baroque and the Now**

*Clear, engaging, and designed for curious listeners—no prior study required.*

**DATES:** WEDNESDAYS | 6:30–8:00 PM | September 16, 23, 30, and October 7

**LOCATION:** Community Music Center Mission Campus, 544 Capp St, San Francisco, CA 94110

**PRICE:** \$100 for the full course (four sessions). This includes a \$20 voucher toward a Philharmonia Baroque concert in the 2026/27 season.\*

**LEARN MORE AT [PHILHARMONIA.ORG/INSIDE](http://PHILHARMONIA.ORG/INSIDE) | (415) 295-1900**

\*May not be combined with other discounts or applied to the price of a subscription.

Not valid for concerts at Stanford. Exclusions apply.

**"The concert was incredible. We enjoyed every minute!"**

**"I was brought to tears by the emotion of the performance."**

**"Beautifully performed and uplifting."**

**"The music and performance were terrific."**

**"The chorus actually gave me chills."**

**"The music was phenomenal!"**



# TICKETS *on sale* JUNE 2

## MAIN CONCERT SERIES

Our main concerts are held in San Francisco, Berkeley, and on the Peninsula. For the best value and subscriber benefits, choose 3, 4, or 5 concerts and become a subscriber.

**SAN FRANCISCO**  
Herbst Theatre

**BERKELEY**  
First Congregational Church

**PENINSULA**

<b>Handel's The Power of Music</b>	<b>FRIDAY, NOV 13</b> 7:30 PM	<b>SATURDAY, NOV 14</b> 2:30 PM	<b>WEDNESDAY, NOV 11</b> 7:30 PM Bing Concert Hall
<b>Baroque Brilliance</b>	<b>FRIDAY, DEC 4</b> 7:30 PM	<b>SATURDAY, DEC 5</b> 2:30 PM	<b>THURSDAY, DEC 3</b> 7:30 PM First United Methodist Church, Palo Alto
<b>Vivaldi and the Oud</b>	<b>FRIDAY, FEB 5, 2027</b> 7:30 PM	<b>SATURDAY, FEB 6, 2027</b> 2:30 PM	<b>SUNDAY, FEB 7, 2027</b> 2:30 PM Bing Concert Hall
<b>Baroque on Stage</b>	<b>FRIDAY, MAR 5, 2027</b> 7:30 PM	<b>SATURDAY, MAR 6, 2027</b> 2:30 PM	<b>THURSDAY, MAR 4, 2027</b> 7:30 PM First United Methodist Church, Palo Alto
<b>The Creation</b>	<b>FRIDAY, APR 9, 2027</b> 7:30 PM	<b>SATURDAY, APR 10, 2027</b> 2:30 PM	<b>SUNDAY, APR 11, 2027</b> 2:30 PM Bing Concert Hall

## Pricing

	SINGLE CONCERT TICKET	5 CONCERTS		4 CONCERTS		3 CONCERTS	
		Package	You Save 25%	Package	You Save 20%	Package	You Save 20%
<b>Level A Premium</b>	<b>\$125</b>	<b>\$465</b>	\$160	<b>\$400</b>	\$100	<b>\$300</b>	\$75
<b>Level B</b>	<b>\$95</b>	<b>\$355</b>	\$120	<b>\$304</b>	\$76	<b>\$228</b>	\$57
<b>Level C</b>	<b>\$65</b>	<b>\$240</b>	\$85	<b>\$208</b>	\$52	<b>\$156</b>	\$39
<b>Level D*</b>	<b>\$40</b>	<b>\$150</b>	\$50	<b>\$128</b>	\$32	<b>\$96</b>	\$24

\* All venues are ADA-Compliant. Accessible seating is the same price as Level D

### Student and young people discounts: Under 30s pay just \$20!

Stanford concert prices may differ. Please visit [live.stanford.edu](http://live.stanford.edu) for single concert ticket pricing. Programs and prices are subject to change.

## Special Concerts

Tickets sold separately and not available as part of a subscription.

### HANDEL'S TOLOMEO

Thur, Jul 23, 7:30 PM  
Herbst Theatre, SF  
Fri, Jul 24, 7:30 PM  
First Congregational Church, Berkeley  
**\$40–\$175**  
Subscribers pay \$30–\$140!

### SESSIONS I

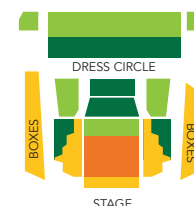
**The Art of the Oud**  
Sat, Jan 30, 2027, 8:00 PM  
The Freight, Berkeley  
**\$90 Premium General Admission**  
Subscribers pay \$85!  
**\$65 General Admission**  
Subscribers pay \$60!

### SESSIONS II

**Alexi Kenney  
with Philharmonia Baroque**  
Thur, May 6, 2027, 7:30 PM  
Oshman Family JCC, Palo Alto  
**\$65 General Admission**  
Subscribers pay \$60!



**SAN FRANCISCO**



**Herbst  
Theatre**

401 Van Ness Ave.  
San Francisco

**BERKELEY**



**First  
Congregational  
Church**

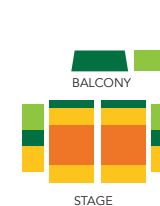
2345 Channing Way  
Berkeley

**PENINSULA**



**Bing  
Concert  
Hall**

327 Lasuen St.  
Stanford



**First United  
Methodist  
Church**

625 Hamilton Ave.  
Palo Alto

## Subscribe *and Save*

We love our subscribers! When you join the Philharmonia subscriber family, you become more deeply connected with the orchestra, and with a growing group of passionate, Baroque music lovers. We recognize and reward your loyalty and commitment with a host of benefits, including:

- The best prices we offer all year
- Protection against ticket price increases for popular shows
- Access to the best seats in all seating sections
- Fee-free ticket exchanges into other concerts in the season
- First right of refusal to keep your seats the next year (full season subscribers only)
- Early purchasing privileges to concerts and events
- Enjoy your same subscriber discounts on extra tickets for friends and family

## What if I Can't *Make a Concert?*

If your plans change, as a subscriber you can...

- Enjoy fee-free ticket exchanges to another date and location: Each subscription series concert takes place in San Francisco, Berkeley, and on the Peninsula, giving you options if you need to switch
- Donate your tickets back to the box office: Give others a chance to buy your seats, and you'll get a tax receipt
- Share the love and gift your tickets to friends or colleagues: They may end up sharing your passion for Philharmonia performances too!

## SUBSCRIBE *and Save!*

With several concerts selling out last season, subscribing is a great way to lock in your seats and your savings!

[philharmonia.org](http://philharmonia.org)

(415) 295-1900

Monday-Friday, 10am-4pm



# PhilharmoniaBaroque

Orchestra & Chorale 1182 Market St, Suite 318, San Francisco, CA 94102

philharmonia.org (415) 295-1900  philharmoniabaroque  philharmoniabaroqueorchestra

"I was blown  
away by the  
experience!  
What a joy!"

—Joan O,  
firsttime attendee

# 26 27



*Tickets* as low as \$40

3-Concert Subscriptions as low as \$96

Nonprofit Org.  
U.S. Postage  
PAID  
San Francisco, CA  
Permit No. 818